



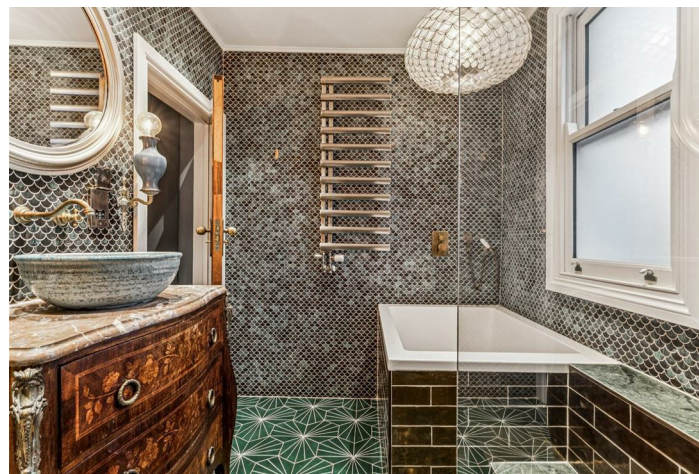
Herbert Gardens, London, W4  
Guide Price £999,950

**WHITMAN & CO.**

SALES · LETTINGS · COMMERCIAL



A fully extended and stylishly presented period terraced house located on this quiet cul-de-sac, a stone's throw from the historic Strand on the Green riverside. The accommodation totals around 1400sqft and comprises a 24'5 through reception room with wood floors and fireplace, a fabulous kitchen/dining room with feature vaulted ceiling, a landscaped garden, a garden studio/office with storage room, three double bedrooms (one with ensuite shower room), a luxurious family bathroom with separate shower and extensive storage throughout. Herbert Gardens is in a lovely area close to the Riverside pubs of Strand on the Green and within easy walking distance of Kew Gardens and Chiswick High Road's extensive facilities. The house also falls within the catchment areas of two excellent local primary schools - Grove Park and Strand on the Green. Transport links include Chiswick and Kew Bridge mainline stations, Gunnersbury tube and Mildmay station, local bus routes and the A4/M4 for routes in and out of London. No onward chain.



# Herbert Gardens, W4

Approximate gross internal area

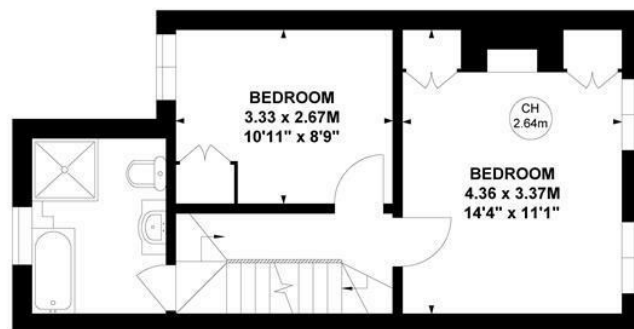
129.13 sq m / 1390 sq ft

(Including Garden Room/Outhouse)

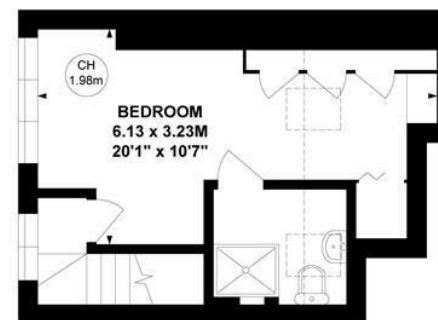
Garden Room/Outhouse : 18.74 sq m / 202 sq ft

Key :

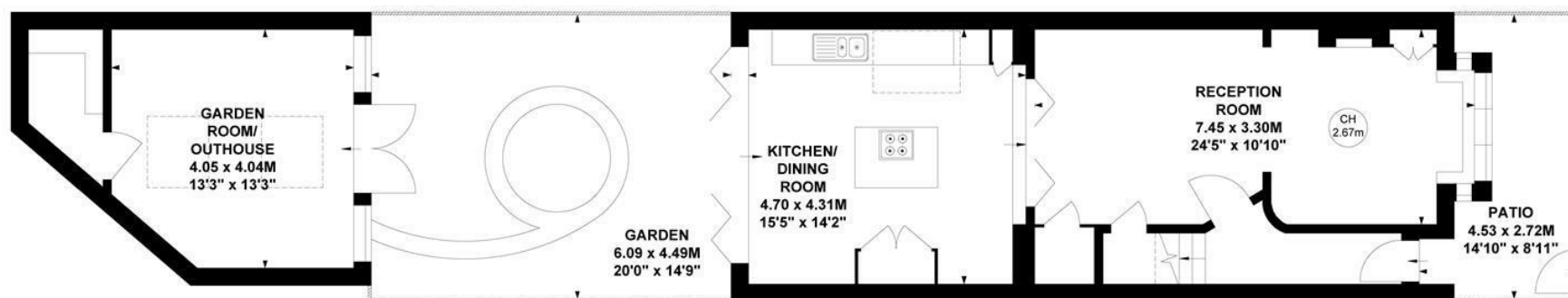
CH - Ceiling Height



First Floor



Second Floor



Ground Floor

Not to scale, for guidance only and must not be relied upon as a statement of fact.

All measurements and areas are approximate only

- Period terraced house in quiet cul-de-sac
- 24'5 Through reception room
- Stunning kitchen extension

- Three beds/two baths
- Landscaped garden with garden studio
- No onward chain

Tenure - Freehold  
Local Authority - Hounslow  
Council Tax - Band F

